

Berklee**Shares.com**TM

FREE music lessons from
Berklee College of Music

**Berklee Practice Method
Drum Set**

Get Your Band Together

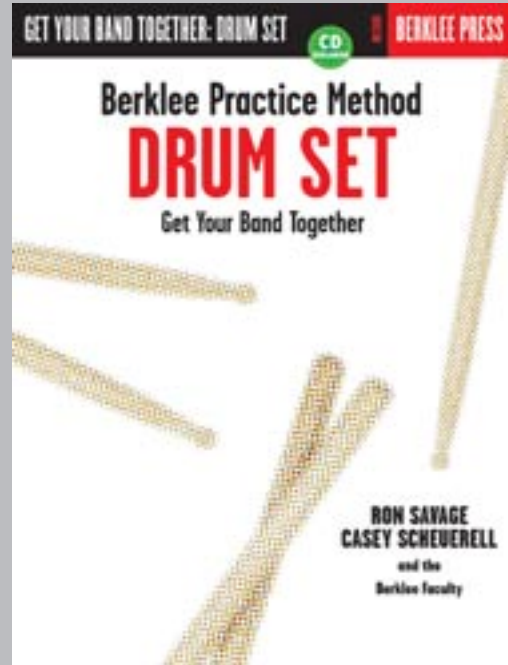
Ron Savage, Casey Scheuerell, and
the Berklee Faculty

Chapter VI

Playing Hard Rock

Click CD icons to listen to
CD tracks from book.
Press ESC to cancel sound.

Check out Berkleeshares.com for more lessons
just like this one.



© 2003 Berklee Press. All Rights Reserved.

“Don’t Look Down” is a *hard rock* tune. Hard rock first appeared in the late 1960s. It has characteristic heavy bass, long, drawn-out chords, and amplified instruments. To hear more hard rock, listen to artists such as Aerosmith, Metallica, Powerman 5000, the Allman Brothers Band, Rob Zombie, Godsmack, 311, Stone Temple Pilots, Black Crowes, Steve Vai, and Smashing Pumpkins.

“DON’T
LOOK
DOWN”

LESSON 21 TECHNIQUE/THEORY

LISTEN **23** PLAY

Listen to “Don’t Look Down,” and then play along with the recording. Try to match the drum part. This tune has two parts.

LEARNING THE BEAT

To learn the beat, follow these three steps:

1. Start with the hi-hat.
2. Add the snare drum.
3. Add the bass drum.

This is the beat to the first part:

Step 1

Hi-Hat

Step 2

Snare Drum

Step 3

Bass Drum

This is the beat to the second part (also the intro):

Step 1

Hi-Hat

Step 2

Snare Drum

Step 3

Bass Drum

Play “Don’t Look Down” along with the recording. Hook up with the groove.

RIDE HAND

Listen to the continuous eighth notes. Each downbeat (eighth note *on* the beat) uses a downstroke, and each upbeat (eighth note *off* the beat) uses an upstroke. Practice playing the bass drum without affecting the feel of the ride hand, especially in the second beat.

Keep the hi-hat closed during the first part. During the second part, play it with the foot on beats 2 and 4.

PRACTICE TIP

Vary your intensity on the hi-hat notes. Develop your sense of where on the surface to play, and how open to keep the cymbals. This will help you create different levels of “wash.”

SNARE HAND

Play a solid snare backbeat.

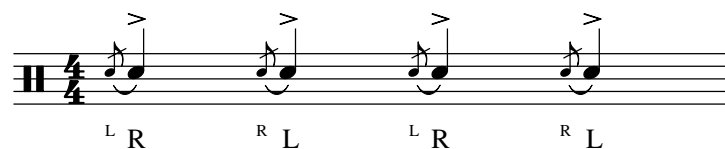
FOOT

The bass drum part in the second beat is syncopated, which makes it tricky. Keep your foot independent of your hands, so that your eighth notes don't get louder when they coincide with the bass drum.

FLAMS

A *flam* is a normal stroke closely preceded by a softer stroke (grace note). One reason that the ending of “Don't Look Down” sounds so powerful is that the drummer is playing flams. Flams are two attacks played so closely together that they sound like one big attack.

Practice flams, alternating hands.



LESSON 22

LEARNING THE GROOVE

HARD ROCK

LISTEN **23** PLAY

Listen to “Don’t Look Down.” This tune has a standard rock/metal groove. It is a heavy feel, with very simple drum and bass parts. These parts must be simple because they are intended to be played in large arenas, where echoes would make busier parts sound muddy. It’s a case of “less is more.”

Eighth notes are played straight, not with a swing feel. The bass drum plays on beats 1 and 3, which is typical of rock drum beats.

HOOKING UP WITH THE BAND

This tune has an active bass part and a relatively straight-ahead drum part, which is different than the other tunes we’ve been playing. On the second part, the guitar and bass play the riff *in unison* (together). This is a big, powerful sound. The keyboard plays long, sustained chords. The drums are the glue, keeping the strong backbeat on the snare, and crashing on each bar’s downbeat.

LEAD SHEET

LISTEN **26** PLAY

Play your own part to "Don't Look Down" and follow the lead sheet.

DON'T LOOK DOWN

"HARD ROCK" ♩ = 88
(BASS & GUITAR RIFF)

BY MATT MARVUGLIO

INTRO

A

B

ENDING

UNISON: BASS, KEYS & GUITAR